



Interior Doors

Ideal combination of aesthetics and durability

HÖRMANN



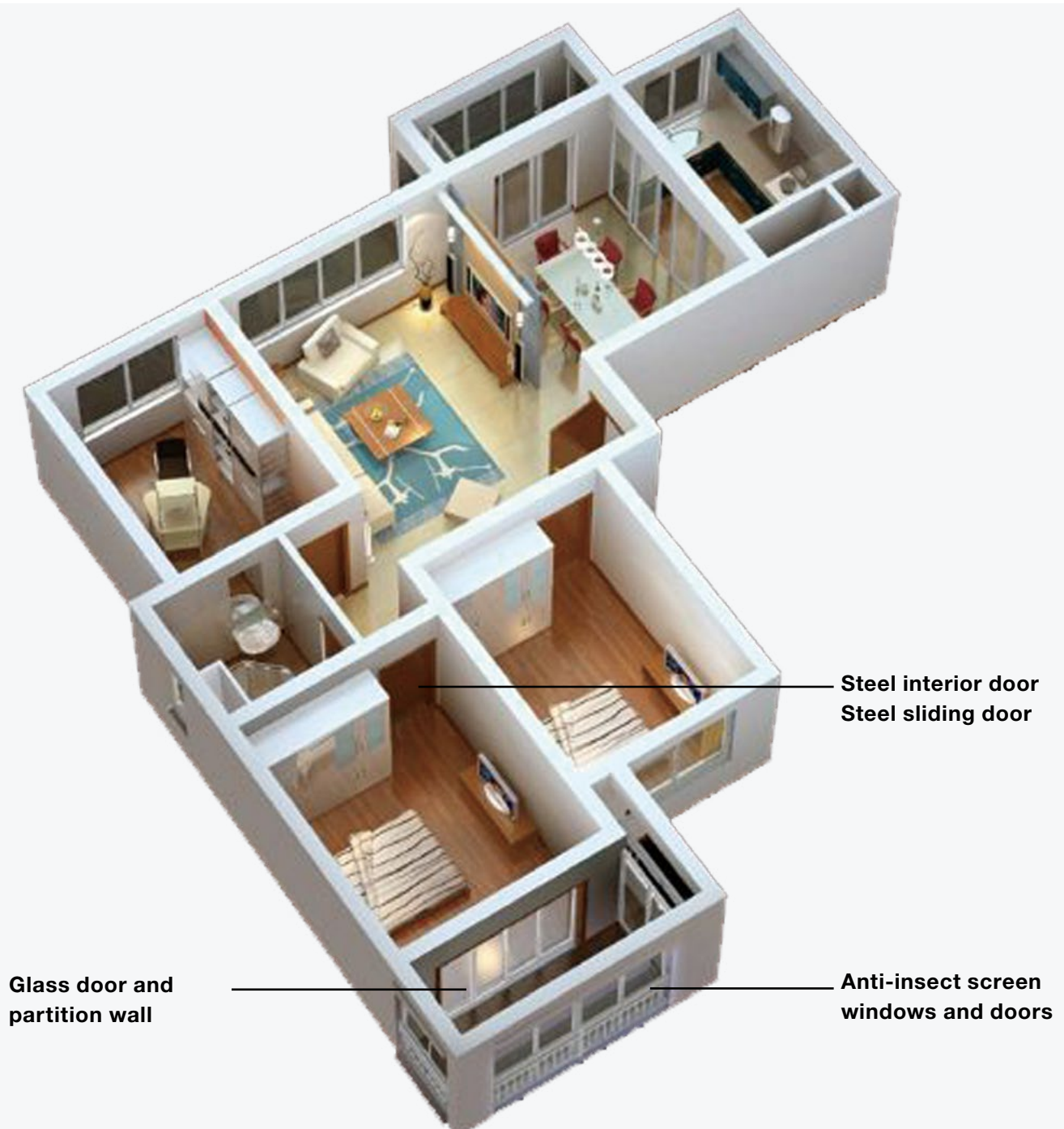


Contents

| | |
|--------------------------------------|----|
| Hörmann-Your Ideal Choice | 4 |
| Steel Interior Doors | 8 |
| Steel Sliding Doors | 10 |
| Glass Doors and Partition Wall | 12 |
| Anti-insect Screen Windows and Doors | 14 |
| Surface | 16 |
| Optional Extras | 18 |
| Glazing and Top Elements | 19 |
| Technical Data | 20 |

Some of the doors shown are equipped with optional extras and do not always correspond to the standard models.
The surface finishes and colours shown are subject to the limitations of the printing process and cannot be regarded as binding. All colours based on RAL.
All rights reserved. No part may be reproduced without our prior permission.
Subject to changes.

Hörmann-your ideal choice



“A good reputation must be earned.”

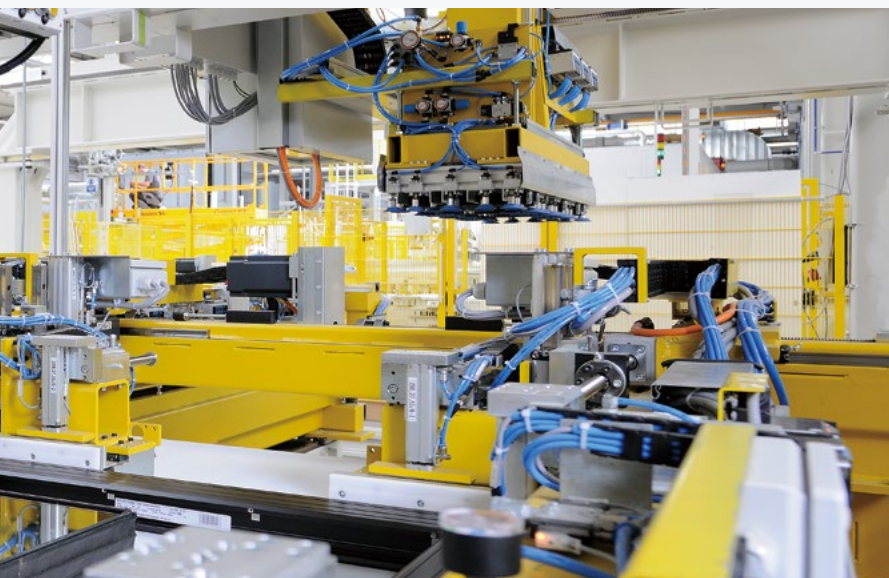
August Hörmann (1886-1944)

In keeping with the tradition started by the company's founder, the name Hörmann delivers brand name quality with extensive product expertise. The family business has decades of experience as a construction component specialist and Hörmann can provide you with a comprehensive and complete solution whether it is a new residential project or existing residential renovation. Hörmann is one of Europe's most successful internal door providers. This makes Hörmann internal door a reassuring purchase.



In-house product development

Continuously making efforts to research and develop new products, improve and optimise existing products are the daily work of Hörmann's R&D team. This is also the reason why Hörmann has been leading the market with its popular products!



Modern manufacturing

All the key components of Hörmann steel doors, including the leaves, frames, E/A openers and most of the hardware, are the results of Hörmann's stringent examination and selection. The good thermal and acoustic insulation is ensured due to the ideal matching between components. Every link between R&D, production, and transportation is strictly monitored by our quality assurance system, thereby ensuring the good product quality.



Competent advice

Hörmann has an experienced sales team that supports you with comprehensive consulting services from project design and technical specifications to final acceptance. Also available to you is our product literature with detailed content and good printing, of which the latest version can be downloaded at Hörmann's website. www.hoermann.com.

Hörmann – your best choice



1

Worldwide-acknowledged German quality

Representing outstanding German technology, our products are made with ingenuity to provide good performance and durability. Hörmann's product is a combination of quality materials and hardware fittings, fabricated to the strict German engineering standards, to satisfy your expectations for aesthetic and durable interior doors. Hörmann's interior doors feature not only good acoustic insulation and airtightness, but also succinct and refined designs.



2

Rich choices of door type and configuration

Hörmann offers a full range of interior doors, including steel interior door, steel sliding doors, partition wall, glass door and insect protection system. The rich product categories and good quality account for the wide use of Hörmann doors in numerous residential building projects. Our doors are equipped with glazing and ventilation to fulfill the needs for light and ventilation. Adaptation of door leaves to areas with different usage requirements can be easily achieved through our diverse hardware fittings.



3

**Colourful surface
to please your eyes**

Rich colours make your life more vivid and brilliant. Hörmann interior doors made with advanced powder coating technology feature a smooth and even surface with nearly 200 RAL colours at your choice. Furthermore, the options also include a wide variety of durable and non-fading Decograin surface, enabling to find the ideal match to your interior decorative style and Enrich your life with colourful embellishments.



4

**Easy to install and
versatile**

Hörmann's qualified engineers customize the door according to your own taste and your actual structural requirements. With a wide range of flexible dimensions, your requirement for an home can be fulfilled. For larger openings, the doors can be further extended by using additional top and side elements. Hörmann provides a rich choice of up to 14 frame types to cater to various wall constructions and different decorative styles. Our carefully manufactured customized products give you a comfortable home environment of your dreams.

Steel interior doors ZK-, EZ-

Application in various residential buildings

Hörmann's steel interior doors are versatile, durable, and easy to close and open, making them the ideal choice for your comfortable home. Various glazing options provide you with more natural light. Make your home more vivid by choosing among nearly 200 RAL colour options and various Decograin surface, satisfy diverse user needs and make sure the products match the desired decorative style.

Design highlights

- Idealized protection for your private space with good sealing, acoustic and thermal insulation;
- Structural opening width for single-leaf door up to 1350 mm, extra large clear passage width for convenient moving of furniture;
- Various surfaces easily match your interior decorative style;
- Diverse glazings and ventilation grilles as configurable options meet various needs for indoor brightness and ventilation;
- Flush or rebated door leaves available for different uses and designs;
- Quality hardware lasts throughout the door's service life;
- Optional door operator PortaMatic provides automatic opening and closing functions.





Steel sliding door HT

For gentle and safe operation

Hörmann steel sliding doors are the ideal choice for a space-saving and convenient way to connect two rooms, as the door leaf is strong yet light, and easy to operate even for elderly persons, children and disabled people. As the door leaf needs no pivoting radius-, it effectively saves interior space. Good-quality fittings and the door-closing buffer allow gentle door opening and closing, making you feel more comfortable at home.

Design highlights

- Door opens sideways for high accessibility and the door leaf needs no pivoting radius, thereby saving interior space;
- Quality suspension system makes the door leaf light yet strong and easy to open, so even the elderly, the disabled-, and children can open the door effortlessly;
- Rails, good-quality hardware fittings and door-closing buffer allow gentle, silent and safe operation;
- Various wall mounted installation methods available for matching diverse decorative styles;
- Structural opening width for single-leaf door up to 1500 mm, for double-leaf door up to 3000 mm, providing spacious passage space.





Glass door HG and partition wall

Ideal for space division

Hörmann glass door and partition wall create a clear and bright living environment for you with the succinct and concise designs. The partition wall is composed of steel frame and quality tempered glass, giving you a bright and clear living environment. The products are easy to install without changing the building's construction, thus being the ideal solution for division of open space. The glass may be film-coated to provide you with more privacy.

Design highlights

Glass door

- A door leaf consisting of a pane of 10 mm tempered glass and fitted in a steel frame contributes to the overall strength of the glass door;
- Aluminium/stainless steel 3D hinges designed for glass door, allowing smoother and quieter door operation;
- Elegant, ergonomic aluminium handle set combined with good-strength lock to make the glass doors beautiful and resistant;
- Elegant and durable. The bolt configured to engage in the corresponding floor recess enables the lock up of the glass door, making the door more secure.

Partition wall

- Single-layer and double-layer tempered glass with different thickness available;
- Powder-coated steel frame with the fine, smooth and polished surfaces, nearly 200 RAL colours available to choose from;
- Partition wall can be equipped with HG glass doors or ZK steel interior doors to create interior private space;
- Manual or electric blinds optionally installed on partition walls to provide both brightness and privacy by changing angles and lifting the blades.





Anti-insect screen windows and doors

Fulfill diverse functional requirements

In the summer, insects are especially bothersome and can transmit illnesses. When fitted with Hörmann's new anti-insect screen windows and doors properly, our premium products can reliably protect you, your family and your employees from pesky mosquitos, flies etc-.

Design highlights

- Our rich product portfolio fits various doors and windows, and is easy to install;
- The screen is made of polyamide and bonded crosswise to the frame, so it is unlikely to deform;
- The aluminium profile is assembled with aluminium brackets, so it is strong and durable;
- Powder-coated steel frame with the fine, smooth and polished surfaces, nearly 200 RAL colours available to choose from;





Insect-repelling gauze roller shutter IR

The IR insect-repelling gauze roller shutter provides safe, reliable insect protection for your windows. You can operate the shutter conveniently from top to bottom. The roll-up brake and comfortable easy-click locking fix the gauze, allowing it to disappear into the good-quality box, where it is safe from dirt and damage.



Stenter frames SP-F / SP-H

Our stable stenter frames are the inexpensive alternative to insect-repelling roller shutters. Their advantages: Stenter frames are ideally suited for windows opening inwards or windows that are open permanently. They can be retrofitted at any time and they can be assembled and disassembled in a few simple steps. The stenter frame is fitted to the window frame with a bracket or via spring bars.



Hinge door RT-B

The convenient, durable RT-B hinge door is ideally suited for highly frequented entrance doors, e.g. leading to your garden or terrace. With its automatic closing mechanism, the door offers you more convenience. An optional stable kick plate ensures the good resistance.



Sliding door ST

The ST sliding door is the ideal insect protection solution for terrace and balcony doors. During opening and automatic closing, the door glides virtually silently and gently over the rails. Practical and convenient, the continuous handle bars are mounted vertically and integrated in the profile, allowing both children and adults to comfortably operate the door. The sliding door version without threshold offers even more safety and comfort.



Full range of colours for your choice

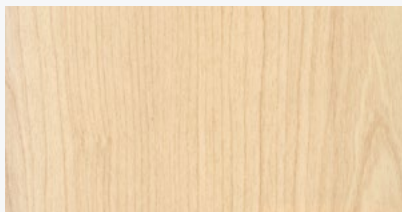
Fresh and bright colours and lifelike Decograin surface finish are ideal means to create a warm living space, giving you a cheerful and relaxing life.

Powder-coated surfaces

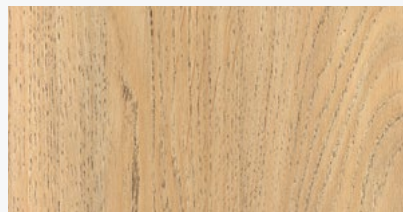
Advanced powder coating technology ensures smooth surfaces with rich colours. The products are free of organic solvents, thus being beneficial for both environmental protection and human health.

Decograin surfaces

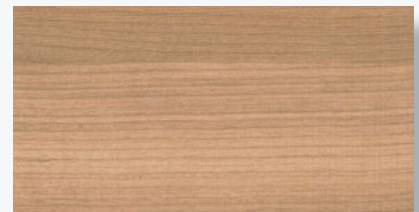
Our Decograin film with good quality is tightly attached to the galvanized steel sheet of door leaf through an advanced heat pressed procedure. The foil-coated timber designs not only have natural looking appearance, but also are of UV resistance, good durability and easy to maintain.



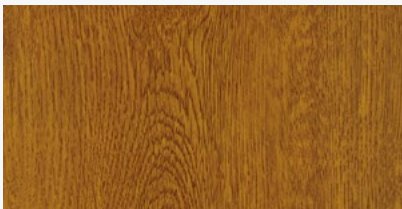
Granada Maple



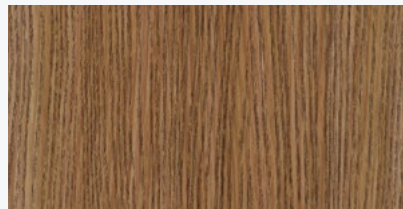
Kings Oak



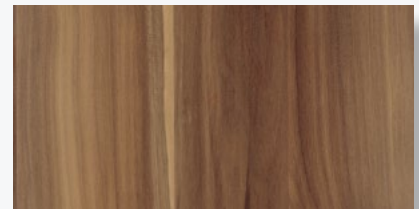
Malaga Cherry



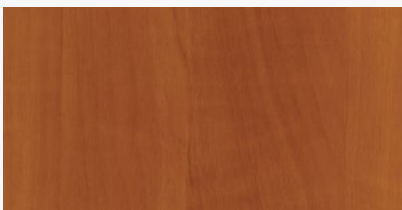
Golden Oak



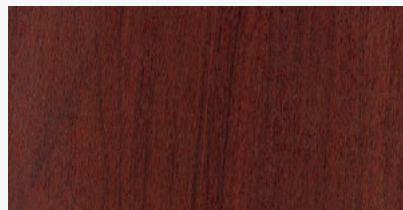
Hungary Ash Cognac



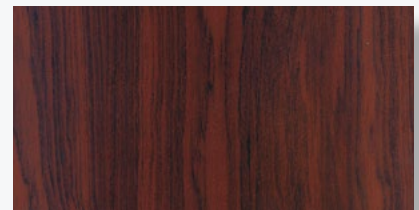
Wallis Plum Natural



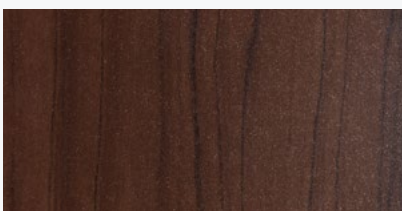
Meran Apple



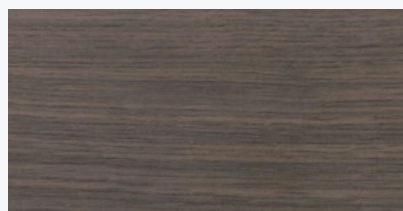
Mahogany



Dark Mahogany



Dark Sandalwood



Horizontal Gray Oak



Horizontal Dark Oak

Optional extras

Levers, knobs and locking cylinders of various materials at your choice

Levers and knobs all made of quality materials are durable and comfortable to hold. You may choose lever/lever or lever/knob handle set according to your actual needs.

Nylon lever



D-110

Aluminium or stainless steel lever



D-110



D-110

Aluminium or stainless steel knob



K-130

Special-purpose handle set



HOE-150 handle set for sliding door



D-110



D-310



D-310



G-160



D-410



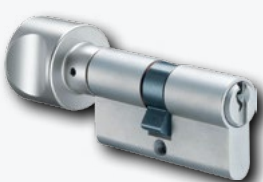
Aluminium D-110 handle set for glass door

Cylinder

Key/key cylinder



Key/knob cylinder



Flush / rebated door leaf (For ZK-,EZ-)

Flush door leaf



Rebated door leaf



Glazings and top elements

Glazings for steel interior door

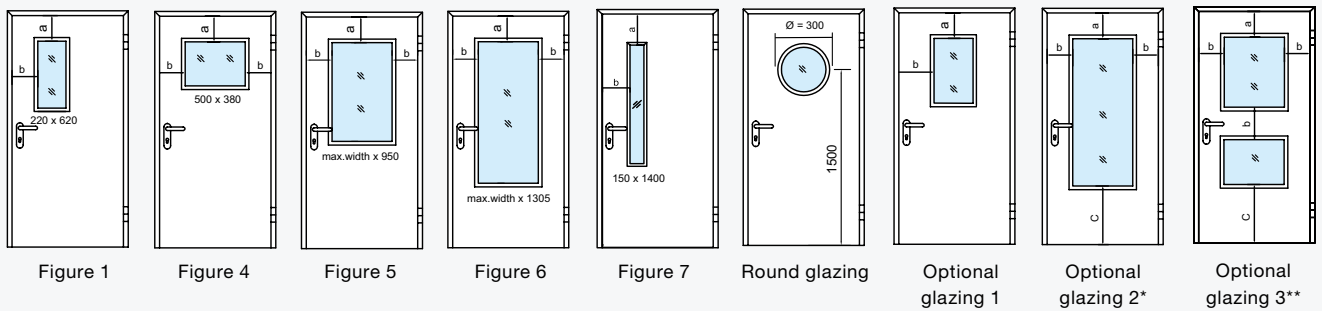


Figure 1, Figure 4, Figure 5, Figure 6, Figure 7, Round glazing, Optional glazing 2, and Optional glazing 3 are suitable for ZK-.

Figure 1, Figure 4, Figure 5, Figure 7 and Optional glazing 1 ($\leq 0.8\text{m}^2$) are suitable for HT.

Figure 1, Figure 4, and Figure 7 are suitable for EZ-.

* Max. height up to ≤ 1800 mm

** If required, please consult technical department.

| | Structural opening height ≤ 2100 mm | Structural opening height > 2100 mm |
|---|--|---------------------------------------|
| a | = 200 mm | = H - 1900 mm |
| b | ≥ 200 mm | ≥ 200 mm |
| c | ≥ 400 mm | ≥ 400 mm |

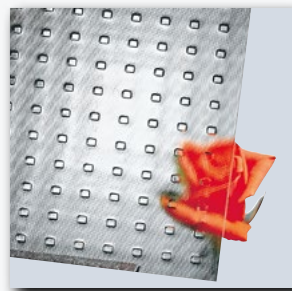
Glass for steel interior doors



Clear glass



Frosted glass

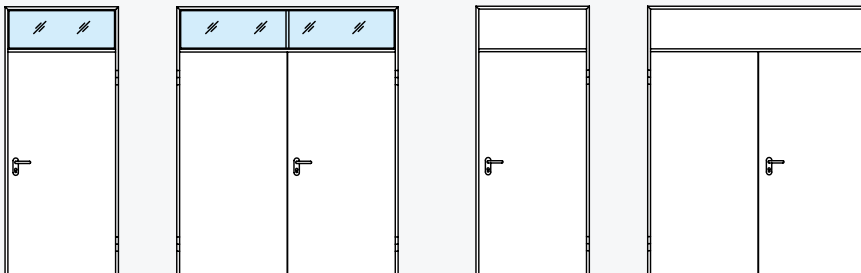


Millenium glass



Textured glass

Top light / panel



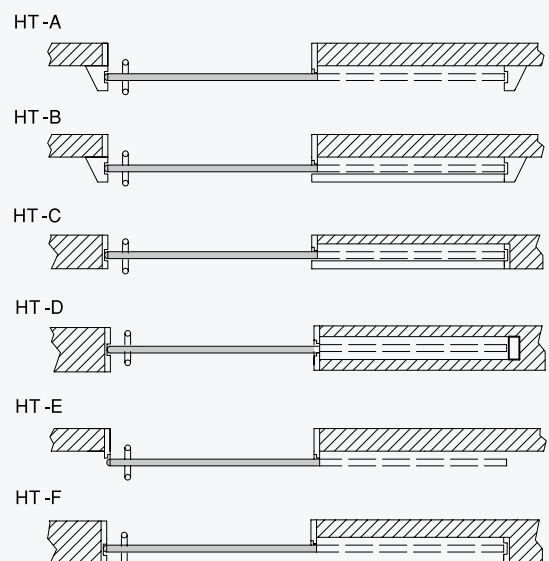
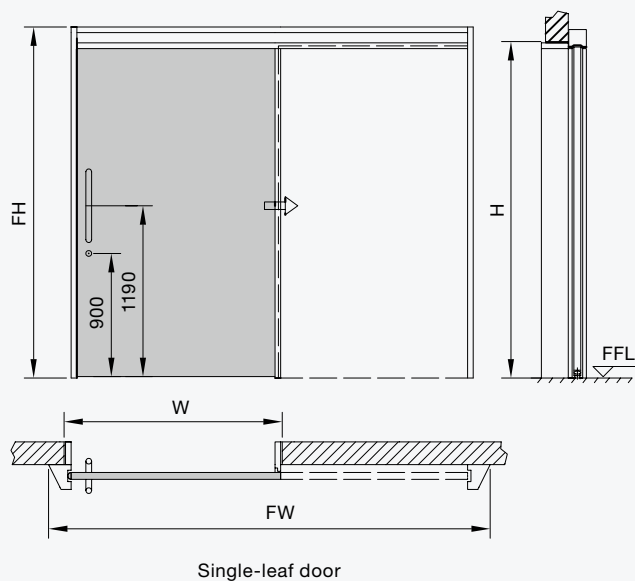
Technical data

| Technical data | Steel interior door ZKS / ZKD | Steel interior door EZS / EZD |
|--|--|---|
| Door leaf type | Flush/rebated | Flush/rebated |
| Door leaf thickness | 40 mm | 40 mm |
| Steel sheet thickness of door leaf | 0.6 / 0.8 mm | 0.6 mm |
| Steel sheet thickness of door frame | 1.5 mm | 1.2 mm |
| Standard frame width | 114 mm | 80 mm |
| Internal filling | Honeycomb paper | Honeycomb paper |
| Maximum dimensions (W x H) | | |
| Single-leaf | 1350 x 2500 mm | 1200 x 2500 mm |
| Double-leaf | 2500 x 2500 mm | - |
| Standard handle set | Black nylon D-110 lever/lever handle set with short plate | Black nylon D-110 lever/lever handle set with short plate (only for EZ) |
| Standard hinge | Screwed in hinge / stainless steel butterfly hinge | Screwed in hinge / stainless steel butterfly hinge |
| Standard lock | ZK lock c/w PVC warden key insert, nylon latch | BB lock set |
| Optional accessories | Glazing, ventilation grille, door operator PortaMatic etc. | Glazing, door operator PortaMatic etc. |
| Acoustic insulation dB | 25 / 31 | - |
| Thermal insulation W / (m ² ·K) | 2.7 / 3.0 | - |

| Technical data | Rolling anti-insect screen shutters | Fixed anti-insect screen frames | Hinged anti- insect screen doors | Sliding anti-insect screen doors |
|-----------------------------|--|--|--|--|
| Scope of usage | Outward opening window and inward opening window | Inward opening window or permanently opened window | Garden or terrace | Garden or terrace |
| Black insect-resistant mesh | ● | ● | ● | ● |
| Sealing brush | ● | ● | ● | ● |
| Tension system | ● | - | - | - |
| Options | Rectangle shutter box | - | Spring hinge, foot guard plate | - |
| Max. width | 1500 mm | 2000 mm | 1200 mm | 1450 mm |
| Max. height | 2400 mm | 2200 mm | 2400 mm | 2500 mm |
| Max. area | 2 m ² | - | - | - |
| Mounting type | Wall side mounted/ window frame mounted | Window frame mounted | Wall side mounted/ window frame mounted | Wall side mounted/ window frame mounted |

| Technical data | Steel sliding door HT | Glass door HG | Partition wall |
|-------------------------------------|-----------------------------------|---|----------------------------|
| Door leaf thickness | 30 mm | - | - |
| Steel sheet thickness of door leaf | 0.6 / 0.8 mm | - | - |
| Tempered glass thickness | | 10 mm | 10 mm / 6+6 mm / 10+10 mm |
| Steel sheet thickness of door frame | 1.5 mm | 1.5 mm | 1.5 mm |
| Standard frame width | 160 mm | 114 mm | 114 mm |
| Internal filling | Honeycomb paper | - | - |
| Maximum dimensions (W x H) | | | |
| Single-leaf | 1500 x 2500 mm | 1200 x 2500 mm | Maximum height 4000 mm |
| Double-leaf | 3000 x 2500 mm | 2400 x 2500 mm | Unlimited maximum width |
| Standard handle set | Satin stainless steel HOE 150 | Aluminium D-110 lever/lever handle set for HG | - |
| Standard hinge | - | Aluminium hinge | - |
| Standard lock | Mortise lock set for sliding door | Glass door lock set | - |
| Options | Glazing | Door closer, door operator PortaMatic | Manual or automatic blinds |

Technical data of steel sliding doors





Experience Hörmann quality

For every application involving new construction and modernisation

Hörmann provides a good basis for comprehensive planning. Carefully matched solutions offer you the well designed products for every area.

Garage doors

Well match your personal architectural style: up-and-over or sectional doors with colourful coatings or a Decograin surface.

Door operators

Enjoy extra convenience and security: Hörmann operators for garage doors and entrance gates.

Steel security doors

Hörmann provides you with safe and sturdy security doors in various grades. There will be one to fit your needs.

Steel doors

Sturdy doors for your entire home, from the basement to the roof.



www.hoermann.com

All rights reserved. No part may be reproduced without our prior permission. Subject to changes.

Hörmann: Quality without Compromise



Hörmann KG Amshausen, Germany



Hörmann KG Antriebstechnik, Germany



Hörmann KG Brandis, Germany



Hörmann KG Brockhagen, Germany



Hörmann KG Dissen, Germany



Hörmann KG Eckelhausen, Germany



Hörmann KG Freisen, Germany



Hörmann KG Ichtershausen, Germany



Hörmann KG Werne, Germany



Hörmann Alkmaar B.V., Netherlands



Hörmann Legnica Sp. z o.o., Poland



Hörmann Beijing, China



Hörmann Tianjin, China



Hörmann LLC, Montgomery IL, USA



Hörmann Flexon LLC, Burgettstown PA, USA



Shakti Hörmann Ltd. India

Hörmann is a professional manufacturer worldwide that offers you a complete range of major building products from one source.

We manufacture in specialized factories using the advanced production technologies.

The comprehensive manufacturing, sales and service network in Europe, Asia and America makes Hörmann your strong international partner for the high-quality construction.

“Quality without Compromise”.

GARAGE DOORS

OPERATORS

DOORS

PARTITION WALLS

INDUSTRIAL DOORS

LOADING TECHNOLOGY

www.hoermann.com

Print: 09. 2019 (Issue: 09. 2019)

1121120200
Some of the doors shown in this brochure have special features and therefore do not always represent the standard version.

Copyright. No part of this brochure may be reproduced without our permission. Subject to changes.

HÖRMANN